

MPS Catalog Number:

S1 90 80 025 MA AL 015

Date:

01/24/2014

**END FITTINGS**

Tower End Fitting:

Eye (Forged Steel)

Line End Fitting:

Ball (Forged Steel) (ANSI 52-5)

**MATERIAL**

Corona Ring (Tower):

None

Corona Ring (Line):

8" Corona Ring

Corona Rings are recommended for applications of 230 kV and above

Number of Sheds:

7 large 8 standard

Rod Diameter:

16 mm

Weight Estimate:

9 lbs 4.1 kg

**DIMENSIONAL VALUES**

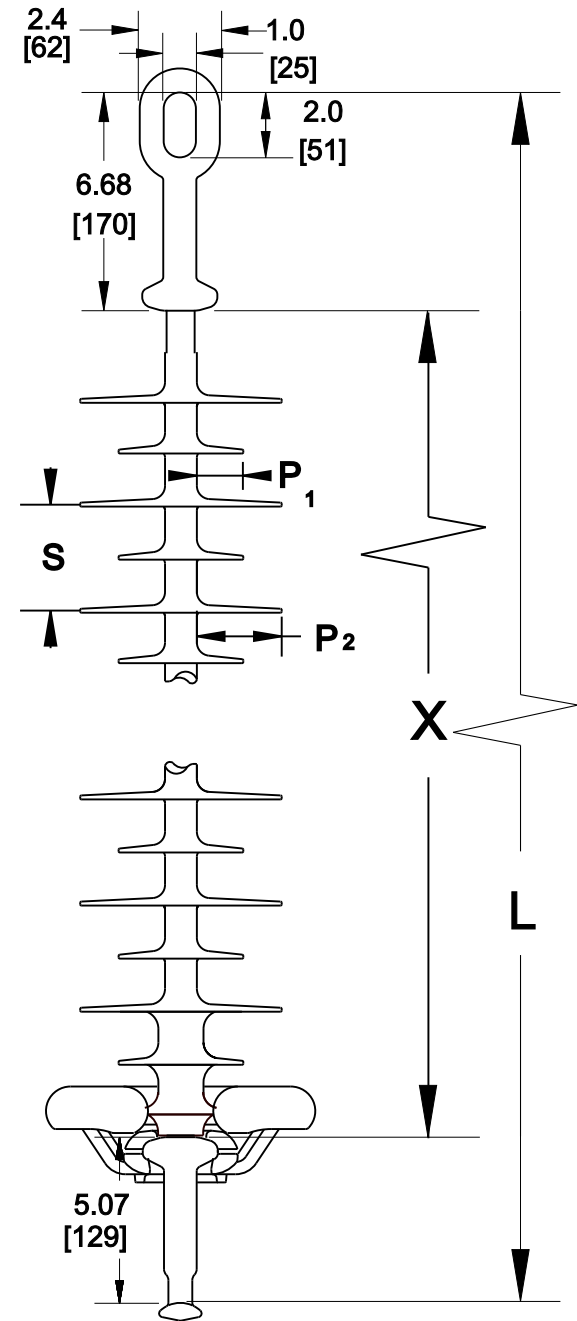
Section Length (L):	36.3 in	922 mm
Rubber Length (X):	24.5 in	622 mm
Standard Shed Height (P1):	1.5 in	38 mm
Large Shed Height (P2):	2 in	51 mm
Projection Ratio (S/P):	-	1.5
Shed Spacing (S):	3 in	76 mm
Dry Arc Distance:	24.2 in	615 mm
Leakage Distance:	66.9 in	1,699 mm

**ELECTRICAL VALUES**

60 Hz Dry Flashover:	245 kV	Min. Withstand:	228 kV
60 Hz Wet Flashover:	220 kV	Min. Withstand:	192 kV
Pos. Critical Impulse Flashover:	425 kV	Min. Withstand:	366 kV
Neg. Critical Impulse Flashover:	458 kV	Min. Withstand:	407 kV

**MECHANICAL VALUES**

Specified Mech. Load (SML):	25,000 lbs	111.2 kN
Routine Test Load (RTL):	12,500 lbs	55.6 kN



This drawing contains confidential information that is property of MacLean Power L.L.C ('MacLean'). Use of MacLean's confidential information without MacLean's express written consent is strictly prohibited and may expose you to legal liability. If you believe that you received this material in error, please destroy it or return it to 'MacLean Power, L.L.C., 7801 Park Place Rd, York, SC, 29745, USA.'

Dimensions: inches [millimeters]

Note: Drawing not actual depiction of insulator appearance

Silicone Rubber Sheath & Sheds  
Complies with applicable ANSI and IEC standards.